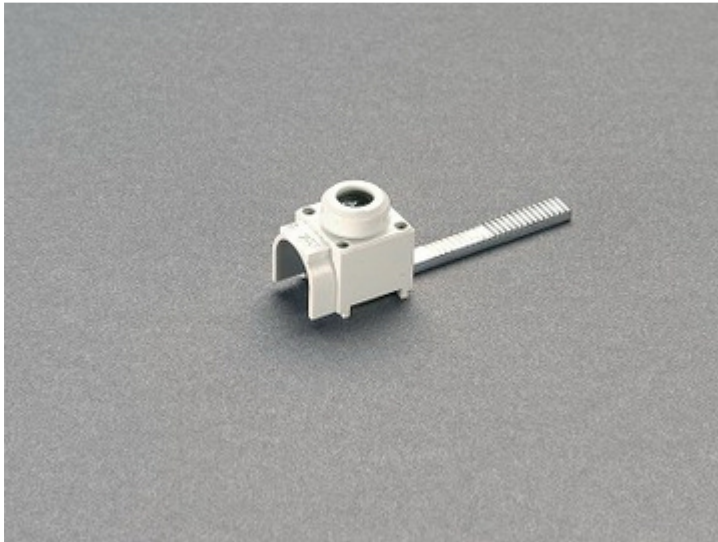


connecting terminal, front connection (31 157)



Description

Article

Part No.: 31 157

connecting terminal, front connection
for comb-type busbars 31 101 and 31 102
6 - 25 mm²

System

Accessories

Product group 07

Subgroup 26

pack size 50

EAN 4021267311575

Catalog page 2015 : 6/1, 6/9

eCl@ss 6.1 27371390
eCl@ss 7.1 27141146
ETIM 4.0 EC000001
ETIM 5.0 EC000001

Approvals

Standards

IEC 61439-1:2011

CCC approval: no certification required

Product data

Electrical data

Rated current (IEC): 80 A

Power dissipation:

The power dissipation at a typical load of 80% of the rated current results to 0 W.
(The power dissipation for operation with rated current would be 0 W.)

Mechanical data

W x H x D: 13 x 18 x 17

L x W x D: x x

Weight: 1.2 kg/100

Terminal points

6 - 25 mm² round, solid and stranded

4 - 16 mm² flexible with wire-end ferrule

Md 2.5 Nm

max. connection diameter 6.5 mm

Reference

Recommended stripping of the insulation on the connection lead approx. 11mm